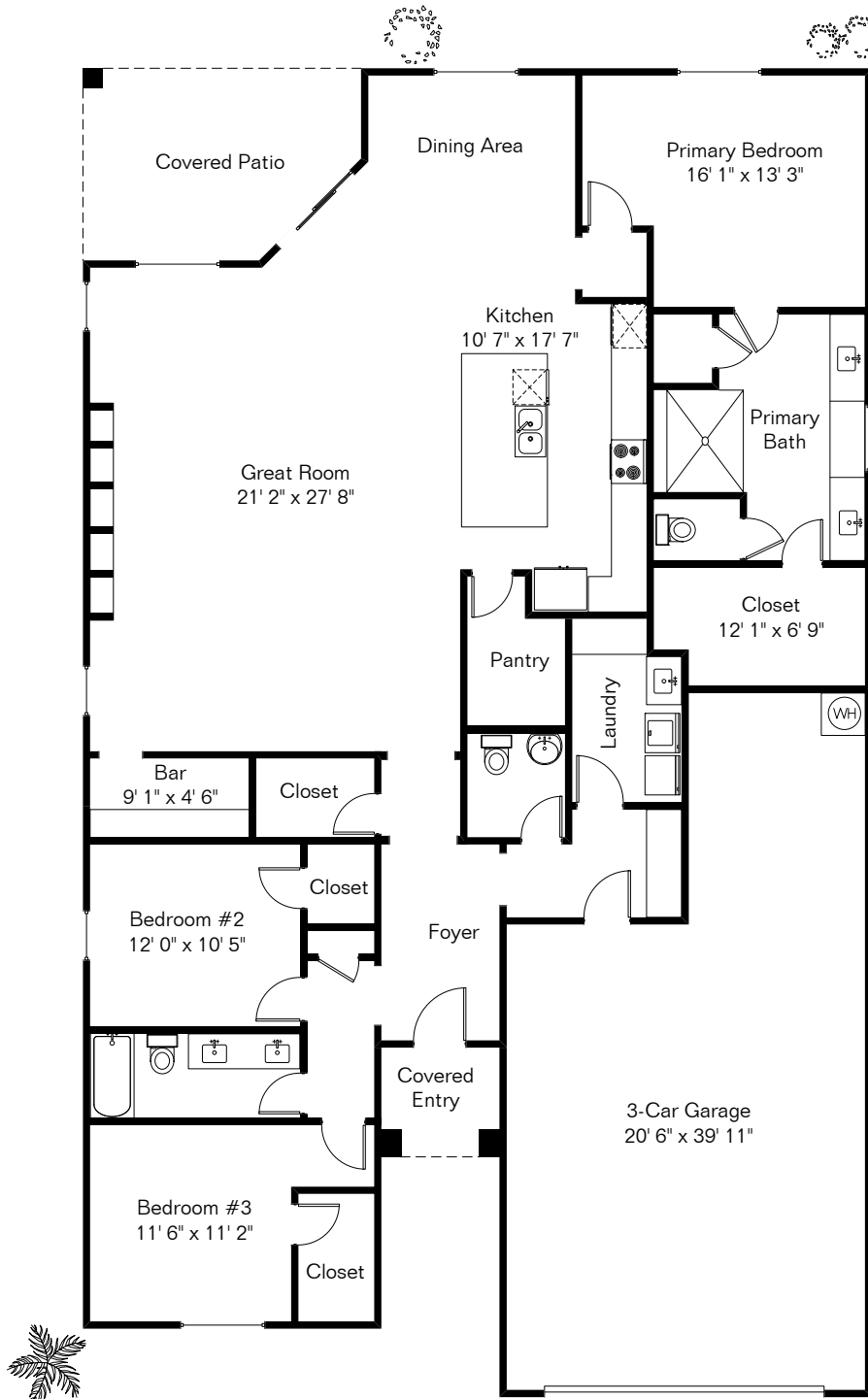


The square footages and room size information are deemed to be reliable but are not guaranteed and should be independently verified. This drawing is for marketing purposes only.

11633 N Village Vista Pl

Presented by Pam Treece
Long Realty Company
(520) 275-2664

Pool Area



Site Visit July 2024



Living Area 2,361 Sq Ft
Garage 713 Sq Ft
Covered Patio 158 Sq Ft

Copyright 2024 Floor Plans First! LLC
All Rights Reserved.

Floor Plans First!
See the Floor Plan First!
FloorPlansFirst.com
(520) 881-1500